

BALDOR • RELIANCE

Customer information packet

XM32442T

40HP, 1775//1480RPM, 3PH, 60//50HZ, 324T, XPF

Class - CLI GP D; CLII GP F,G

Division - Division I

Specifications

Enclosure	XPFC
Frame	324T
Frame Material	Iron
Frequency	50.00 Hz 60.00 Hz
Motor Letter Type	Three Phase
Output @ Frequency	40.000 HP @ 60 HZ 30.000 HP @ 50 HZ
Phase	3
Synchronous Speed @ Frequency	1800 RPM @ 60 HZ
Voltage @ Frequency	460.0 V @ 60 HZ 190.0 V @ 50 HZ 230.0 V @ 60 HZ 380.0 V @ 50 HZ
XP Class and Group	CLI GP D; CLII GP F,G
XP Division	Division I
Agency Approvals	UL CSA EEV
Ambient Temperature	40 °C
Auxillary Box	No Auxillary Box
Auxillary Box Lead Termination	None
Base Indicator	Rigid
Bearing Grease Type	Polyrex EM (-20F +300F)
Blower	None
Constant Torque Speed Range	6
Current @ Voltage	45.000 A @ 380.0 V 48.000 A @ 460.0 V 90.000 A @ 190.0 V 96.000 A @ 230.0 V
Design Code	A
Drip Cover	No Drip Cover
Duty Rating	CONT

Part detail

Revision	B
Type	AC
Mech. spec.	
Base	
Status	PRD/A
Elec. spec.	12WGY276
Layout	12LYL018
Eff. date	07-24-2023
CD Diagram	CD0180
Poles	04
Leads	9#8
Proprietary	False
Created date	06-24-2020

Efficiency @ 100% Load	94.1 %
Electrically Isolated Bearing	Not Electrically Isolated
Feedback Device	NO FEEDBACK
Heater Indicator	No Heater
High Voltage Full Load Amps	45.0 a
Insulation Class	B
Inverter Code	Inverter Duty
IP Rating	NONE
KVA Code	H
Lifting Lugs	Standard Lifting Lugs
Locked Bearing Indicator	Locked Bearing
Max Speed	2700 rpm
Motor Lead Termination	Flying Leads
Motor Standards	NEMA
Motor Type	1254M
Mounting Arrangement	F1
Number of Poles	4
Overall Length	32.00 IN
Power Factor	82
Product Family	Hazardous Location Motor
Pulley Face Code	Standard
Rodent Screen	None
RoHS Status	ROHS NON-COMPLIANT
Service Factor	1.00
Shaft Diameter	2.125 IN
Shaft Ground Indicator	No Shaft Grounding
Shaft Rotation	Reversible
Speed	1775 rpm
Speed Code	Single Speed
Starting Method	Direct on line
Thermal Device - Bearing	None
Thermal Device - Winding	Normally Closed Thermostat
Vibration Sensor Indicator	No Vibration Sensor
Winding Thermal 1	None

Winding Thermal 2

None

XP Temp Code

T3C

Nameplate

NP0887XPSLEV

NO.		CC	010A		
S/N		TEMP CODE	T3C		
SPEC.	12-0000-1730	INV.TYPE	PWM		
CAT.NO.	XM32442T	C HP FR	60	C HP TO	90
HP	40//30	CT HZ FROM	6	CT HZ TO	60
VOLTS	230/460//190/380	VT HZ FROM	6	VT HZ TO	60
AMPS	96/48//90/45	MAG CUR	40/20		
RPM	1775//1480	MX RPM	2700		
HZ	60//50	PH	3	CL	F
		NOM.EFF.	94.1		
SER.F.	1.00	DES	A	SL HZ	0.83
				WK2	7.19
FRAME	324T	RATING	40C AMB-CONT		
	1.15SF ON SINEWAVE				
	NEMA MG-1,PT.5,IP54				

Parts list

Part number	Description	Quantity
SA385208	SA 12-0000-1730	1.000 ea
RA375450	RA 12-0000-1730	1.000 ea
LB1624	COMBINED WARNING LABEL, ISO/ANSI PICTOGR	1.000 ea
LC0181	CONNECTION LABEL	1.000 ea
NP0887XPSLEV	SS XP INV UL CSA-EEV CC CL-I GP-D	1.000 ea
85XU0407S04	4X1/4 U DRIVE PIN STAINLESS	4.000 ea
85XU0407S04	4X1/4 U DRIVE PIN STAINLESS	2.000 ea
MN416A01	TAG-INSTAL-MAINT no wire (2100bx)4/22	1.000 ea
LB1073	ALUM XP CAUTION LABEL	1.000 ea
12FH1001A01	FAN HOUSING 312 EXPLOSION PROOF MOTORS	1.000 ea
HW1001A31	LOCKWASHER 5/16, ZINC PLT.591 OD, .319 I	3.000 ea
10XN3118K12	5/16-18 X .75 GRADE 5, ZINC PLATED	3.000 ea
09FN3001B03SP	EXTERNAL FAN, PLASTIC (COMES W/SCREW FRO	1.000 ea
HW2500A25	WOODRUFF KEY USA #1008 #BLOW CARBON STEE	1.000 ea
MJ1000A02	GREASE, POLYREX EM EXXON	0.200 lb
12EP1705A01	ENDPLATE, MACH. 312 - EXPLOSION PROOF 31	1.000 ea
HA3051A03	1/2-13X2.75 BLT GR8 1.75 TO E NC F/S	4.000 ea
HW1001A50	LOCKWASHER 1/2, ZINC PLT,.879 OD, .509 I	4.000 ea
HW5100A13	W4627-047 WVY WSHER	1.000 ea
HW4500A20	1/8NPT SL PIPE PLUG	1.000 ea
HW4500A20	1/8NPT SL PIPE PLUG	1.000 ea
12EP1706A01	ENDPLATE, MACH. 312 - EXPLOSION PROOF 31	1.000 ea
HW1001A50	LOCKWASHER 1/2, ZINC PLT,.879 OD, .509 I	4.000 ea
HA3051A03	1/2-13X2.75 BLT GR8 1.75 TO E NC F/S	4.000 ea
10XN3118K40	5/16-18 X 2.75" HEX HD, GRADE 5	4.000 ea
HW1001A31	LOCKWASHER 5/16, ZINC PLT.591 OD, .319 I	4.000 ea
HW4500A20	1/8NPT SL PIPE PLUG	1.000 ea
HW4500A20	1/8NPT SL PIPE PLUG	1.000 ea
12CB1001A01	K.O.BOX, MACH X-PROOF, 1.50 NPT HOLE	1.000 ea
10XN3118K16	5/16-18 X 1' GRADE #5, STL, ZINC PLATE	4.000 ea
HW1001A31	LOCKWASHER 5/16, ZINC PLT.591 OD, .319 I	4.000 ea

WD1000B25	GND LUG, BURNDY L125HP OR T&B L125HP-BB	1.000 ea
19XW3118G08	.31-18X.50,HEX WSHR HD,TAPTITE 2,GREEN	1.000 ea
12CB1501A01	COND.BOX LID, MACH., X-PROOF, 310,312	1.000 ea
10XN3816K20	3/8-16 X 1.25 HEX HD CAP GRADE 5	6.000 ea
HW1001A38	LOCKWASHER 3/8, ZINC PLT .688 OD, .382 I	6.000 ea
MG1025G29	WILKOFAST, 789.229, DARK CHARCOAL GRAY	0.125 ga
14PA1000	PACKAGING 314 GROUP COMBINED PRINT	1.000 ea
HW2501H33	KEY, 1/2 SQ X 3.875	1.000 ea

AC Induction Motor Performance Data

Record # 43813

Typical performance - not guaranteed values

Winding: 12WGY276-R023		Type: 1254M		Enclosure: XPFC	
Nameplate Data			460 V, 60 Hz: High Voltage Connection		
Rated Output (HP)	40	Full Load Torque	118 LB-FT		
Volts	230/460	Start Configuration	direct on line		
Full Load Amps	96/48	Breakdown Torque	386 LB-FT		
R.P.M.	1775	Pull-up Torque	193 LB-FT		
Hz	60 Phase	3	Locked-rotor Torque	216 LB-FT	
NEMA Design Code	A	KVA Code	H	Starting Current	338 A
Service Factor (S.F.)	1	No-load Current	19.9 A		
NEMA Nom. Eff.	94.1	Power Factor	82	Line-line Res. @ 25°C	0.14898 Ω
Rating - Duty	40C AMB-CONT		Temp. Rise @ Rated Load	54°C	
			Locked-rotor Power Factor	27	
			Rotor inertia	7.19 LB-FT ²	

Load Characteristics 460 V, 60 Hz, 40 HP

% of Rated Load	25	50	75	100	125	150
Power Factor	47	69	78	83	85	85
Efficiency	90.1	93.5	94.2	94.2	93.8	93.1
Speed	1793.5	1788	1782.5	1776.6	1770.7	1764.1
Line amperes	22.9	29.5	38.4	48.1	59.2	70.8

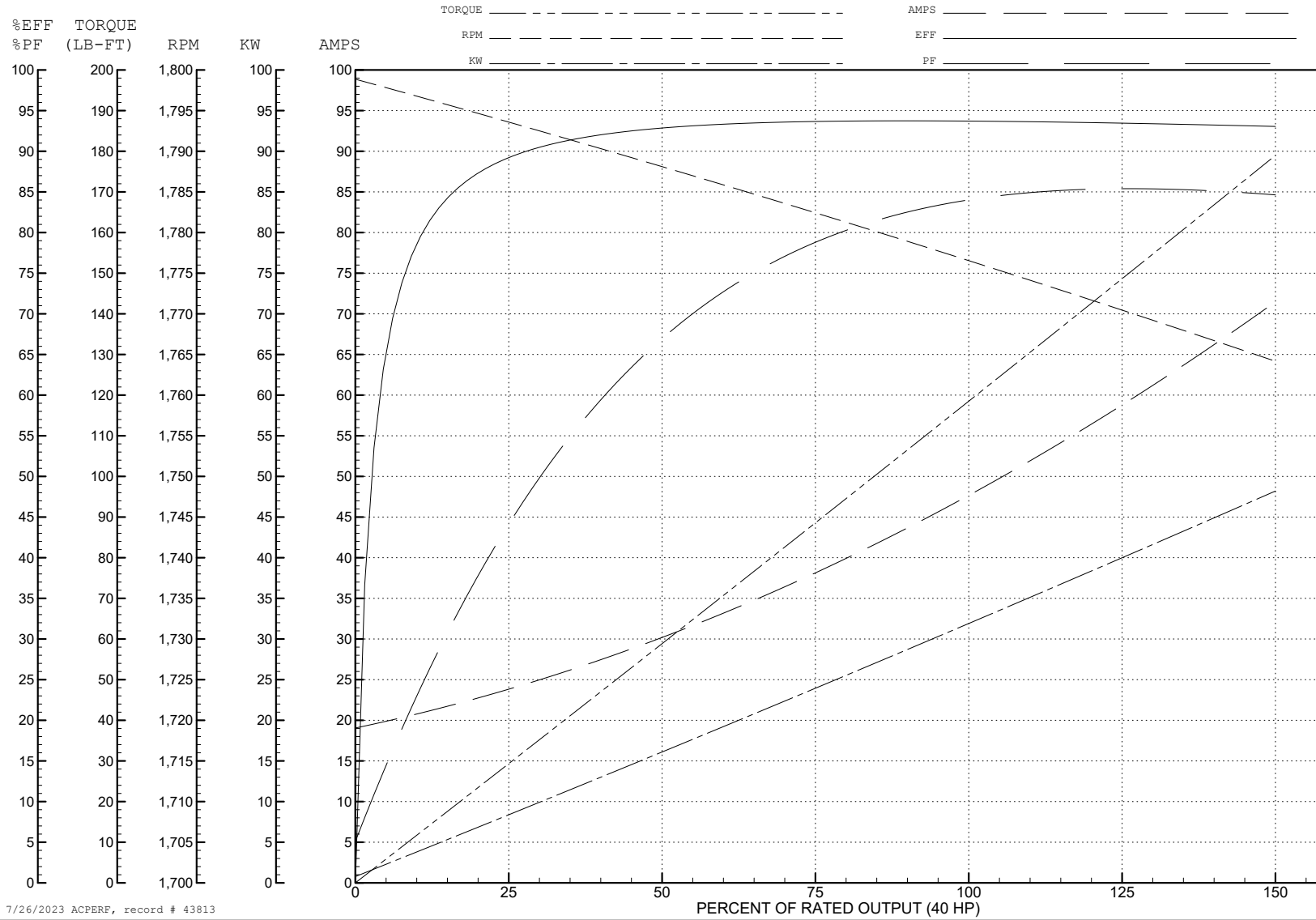
ABB Motors and Mechanical Inc.

WINDING # 12WGY276

Typical performance - not guaranteed values.

40 HP 3 PH 60 HZ 1775 RPM 460 V 1254M

TORQUES (LB-FT): PO=386 PU=193 LR=216 LRA=338



7/26/2023 ACPERF, record # 43813

AC Induction Motor Performance Data

Record # 74483

Typical performance - not guaranteed values

Winding: 12WGY276-R040		Type: 1254M	Enclosure: XPFC			
Nameplate Data			380 V, 50 Hz: High Voltage Connection			
Rated Output (HP)	40//30		Full Load Torque	106 LB-FT		
Volts	230/460//190/380		Start Configuration	direct on line		
Full Load Amps	96/48//90/45		Breakdown Torque	373 LB-FT		
R.P.M.	1775//1480		Pull-up Torque	203 LB-FT		
Hz	60//50	Phase	3	Locked-rotor Torque	227 LB-FT	
NEMA Design Code	A		KVA Code	H	Starting Current	331 A
Service Factor (S.F.)	1				No-load Current	19.39 A
NEMA Nom. Eff.	94.1	Power Factor	82		Line-line Res. @ 25°C	0.145 Ω
Rating - Duty	40C		AMB-CONT		Temp. Rise @ Rated Load	47°C
S.F. Amps					Temp. Rise @ S.F. Load	57°C
					Locked-rotor Power Factor	30.4
					Rotor inertia	7.19 LB-FT ²

Load Characteristics 380 V, 50 Hz, 30 HP

% of Rated Load	25	50	75	100	125	150
Power Factor	44	66	77	82	84	85
Efficiency	88.7	92.8	93.7	93.1	92.8	92.5
Speed	1494	1489	1484	1479	1474	1468
Line amperes	21.96	27.73	35.61	44.25	54.18	64.6

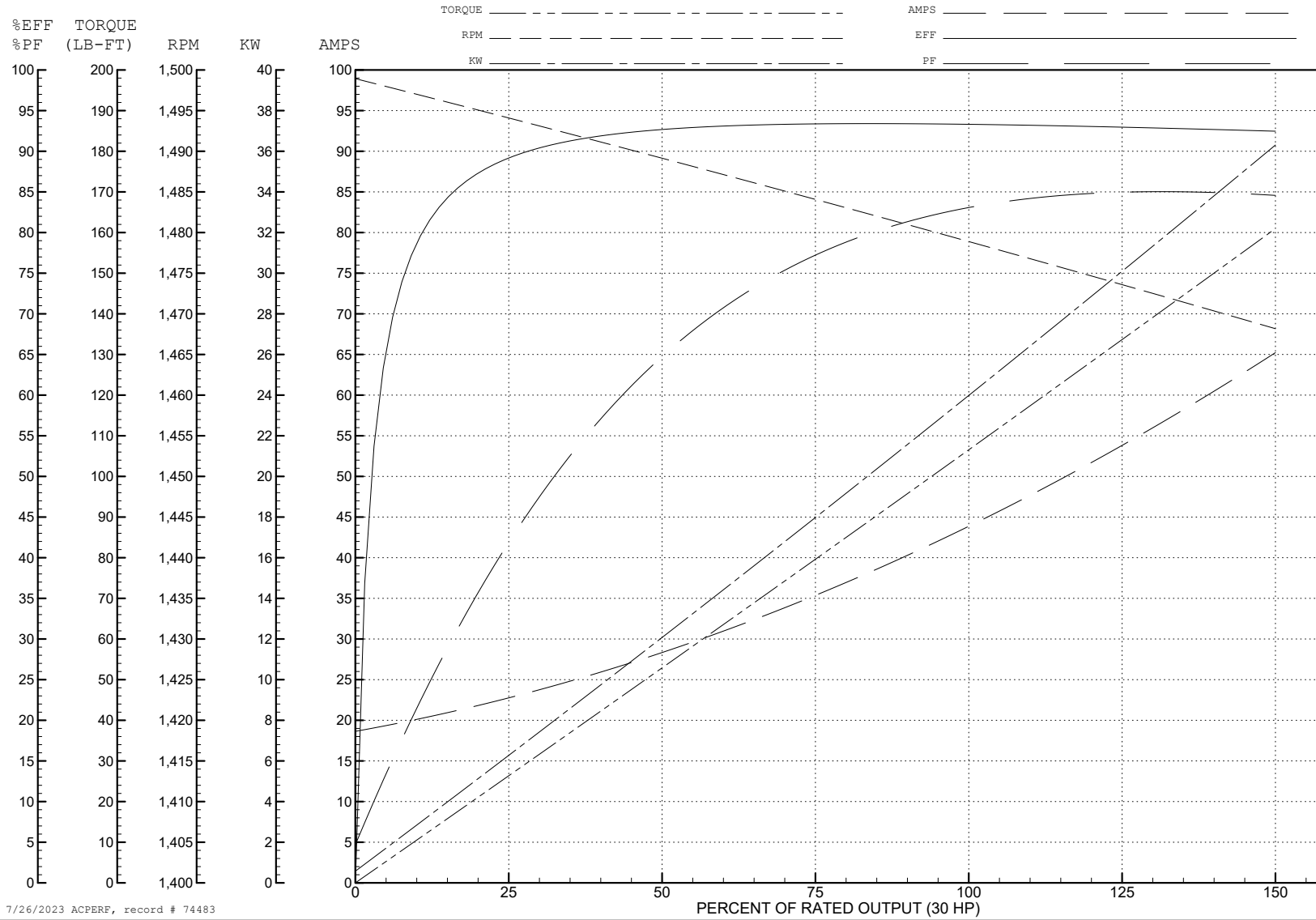
ABB Motors and Mechanical Inc.

WINDING # 12WGY276

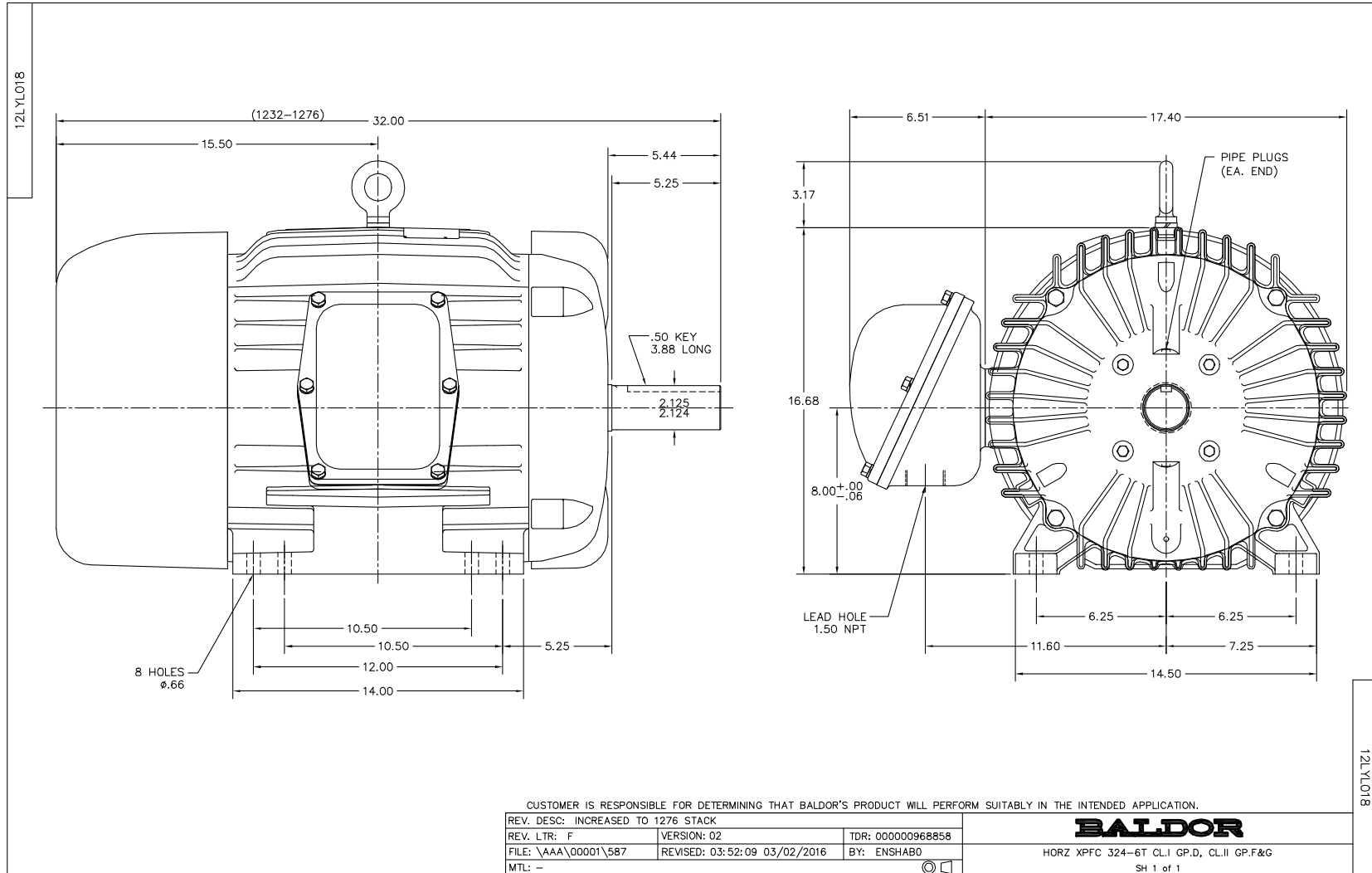
Typical performance - not guaranteed values.

30 HP 3 PH 50 HZ 1479 RPM 380 V 1254M

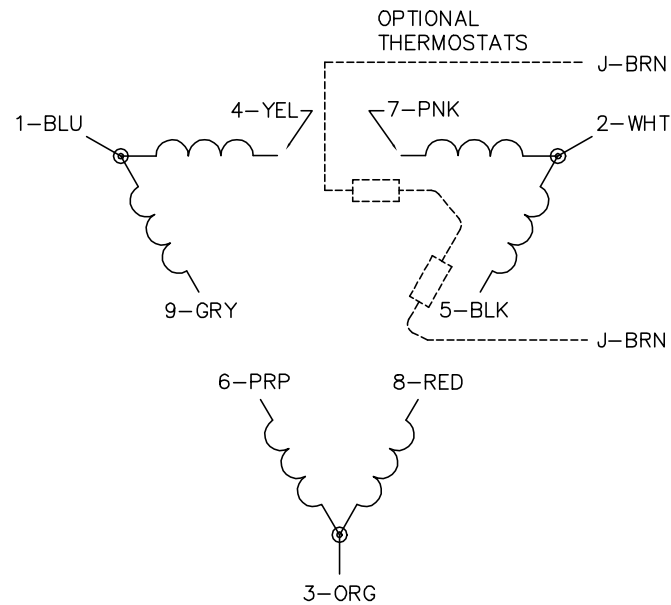
TORQUES (LB-FT): PO=373 PU=203 LR=227 LRA=331



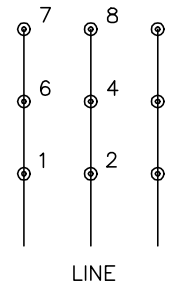
7/26/2023 ACPERF, record # 74483



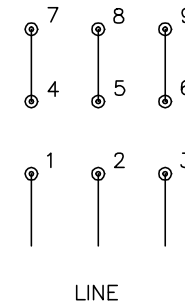
CD0180



LOW VOLTAGE
(2D)



HIGH VOLTAGE
(1D)



NOTES:

1. INTERCHANGE ANY TWO LINE LEADS TO REVERSE ROTATION.
2. OPTIONAL THERMOSTATS ARE PROVIDED WHEN SPECIFIED.
3. ACTUAL NUMBER OF INTERNAL PARALLEL CIRCUITS MAY BE A MULTIPLE OF THOSE SHOWN ABOVE.
4. LEAD COLORS ARE OPTIONAL. LEADS MUST ALWAYS BE NUMBERED AS SHOWN.

CD0180

REV. DESC: ADD CLASS CONN00000007		
REV. LTR: D	VERSION: 01	TDR: 000001099922
FILE: \AAA\00005\148	REVISED: 10: 25: 29 02/19/2019	BY: ENBRIRO
MTL: -	© □	

BALDOR - RELIANCE®

3PH, DV, 9 LEADS, DELTA CONNECTION

SH 1 of 1